

Boat Floats



MATERIALS

FOR STUDENT:
(one per student unless otherwise noted)

- FloraCraft® Make It: Fun® Foam Egg, 2 15/16" x 3 1/16" (one per two students)
- Blue, green or teal colored foam sheet (will get 27 sails per 12" x 18" sheet)
- Wood sandwich pick (or thin, 3 1/2" – 4" length dowel)
- Pencil
- Paper plate
- Small plastic bag (to hold damp boats)

FOR TEACHER:

- Serrated knife
- Craft knife
- Scissors
- Ruler
- Pencil
- Fine line black felt tip permanent marker
- Copy paper (for pattern)
- Hot melt glue gun (for teacher only) or thick white tacky glue
- Wastebasket with liner (to catch foam dust when smoothing)
- Low, flat plastic container(s) (to hold water for boats)
- Bath towel(s) to catch excess water
- Water

TEACHER PREPARATION

Note: Read through all instructions first. The intention is for all of the parts to be very secure, for play. Have a glue gun plugged in and ready to use (ideally set on low temperature) and out of student reach. This can give you immediate adhesion when in a hurry to help students. Be sure glue has cooled before returning project to students (takes a minute or so.) It is also recommended that you make one boat first, before preparing the materials for the others, since knowing how the parts fit, might affect how you prepare. Also, suggest that you show your finished project sample only when you want to explain something, or students tend to work ahead by seeing and copying.

[1] For boats, use serrated knife to cut foam eggs in half lengthwise.

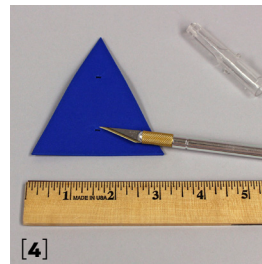
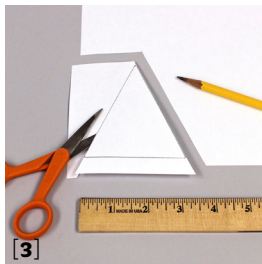
[2] To smooth cut edges of foam egg halves, rub together cut surfaces, in a circular motion, over the wastebasket until smooth.

[3] Use pencil and ruler on copy paper to draw a triangle that measures 3" across bottom and 3 1/2" up to top middle point. (Note: Sides will measure 3 3/4".) Cut out pattern.

Use pencil to trace pattern onto foam and cut with scissors. (See TIPS for speedy-cutting method.)

[4] Use craft knife to make a 1/16" horizontal slit 1 1/2" straight down from top point. Make another slit 3/4" up from bottom middle. This creates holes for inserting sandwich pick. Repeat for all students.

[5] Just before students arrive, at each student's place, set paper plate, foam egg half, sheet foam triangle sail with slits, and sandwich pick. On sail, neatly print child's name in marker. Lay bath towels in play area. Set container(s) on towels and fill them half way with water. (Only need about an inch of water for boats to float.)



SOCIAL STUDIES GRADE LEVEL EARLY CHILDHOOD – PRE K

COMPLETION TIME

- 10 minutes



OBJECTIVES

Students learn:

- Information about types of transportation and how sail boats and ships work
- Listening and following step by step instructions
- Use of fine motor skills and afterwards, play

STANDARDS

- Develop spatial understanding, perspectives, and personal connections to the world
- Use positional phrasing (over, under, here, there, inside, outside)
- Understand that individuals have unique talents but also work (play) with others in groups

LESSON INTRODUCTION

Discuss that there are different ways people move from one place to another. Ask about various types of transportation in their community, encouraging them to mention bicycle, motorcycle, car, bus, train, airplane and boat. Explain that boats were also very important to people many years ago when they explored the world. That's how most people came to this country – on huge boats called ships. And now we still have food, clothes, furniture and other products shipped to us from other countries.



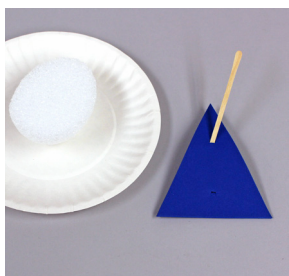
makeitfuncrafts.com

INSTRUCTIONS

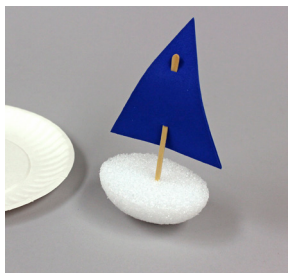
[1] Discuss the lesson on boats, emphasizing how much people depended on them being able to float to carry people and cargo. Explain that sails catch the wind that moves the ship through the water.

[2] Demonstrate and have students insert the point of their sandwich pick (mast) through the top of the sheet foam triangle (sail). Then have them pull it through far enough to insert the point into the other slit. Caution them not to pull it all the way through.

Help those who need help in re-inserting sandwich picks.



[3] Have students insert points of sandwich picks (masts) into center of cut (flat) side of foam egg half. If picks tend to slip out easily, you can hot glue them into the foam egg half.



[4] Allow students to launch boats in water, encouraging them to keep as much water inside the containers as possible. Also, ask that they only move their own boats, when playing.

[5] Have students set boats back onto their plates – then into plastic bags to contain water.

MODIFICATIONS

To simplify project:

- Have one helper per two students.

To expand project:

- Have students use patterns to trace and cut their own sheet foam triangle sails. (But an adult will still need to use a craft knife to make slits for sandwich pick masts.)
- Make larger ships with larger egg halves, varying the color, size and number of sails.
- Use white foam for sails and have students draw designs on them with markers.

For multiple ages:

- Younger and older students can work side-by-side with older students being encouraged to make more complex ships, based on Internet research.
- Have older students design other types of transportation for younger students to make, or to make for themselves.

ADDITIONAL IDEAS

- Use for science, discussing floating or sinking.
- Use a paper or plastic drinking straw to blow at the sails to make boats move on the water.
- Read a fun book on boats/ships to students while they play.
- Create friendly boat races.



makeitfuncrafts.com

TIPS

- Sheet foam is also available in smaller sizes that you might prefer to use, since that would allow more varied colors for the class. Despite writing names on sails, this would make boat recognition and retrieval a bit easier, and play a bit more fun.
- Use large paper cutter to cut sheet foam into three 3 1/2" x 18" strips. Then trace triangle pattern with point up, point down, point up, etc. all along strips. (Leave no space between triangles.) Use paper cutter to cut apart triangles. (Keep sheet foam near hinge of cutter and steadily pull arm toward cutter, for sharpest cutting.)
- Keep slits in triangle sails short so that sandwich pick can't easily slip out of sail. If it does, use glue gun to tack-glue middle of sandwich pick on back side. Don't give back to student for a moment so that the glue has cooled enough.
- You may want to cover water containers with lids or drape towels over them so that students aren't tempted to play before the boats launch! 😊

REFERENCES

Toot and Pop! by Sebastien Braun
Three Bears in a Boat by David Soman
Boat Book by Gail Gibbons
My Blue Boat by Chris L. Demarest